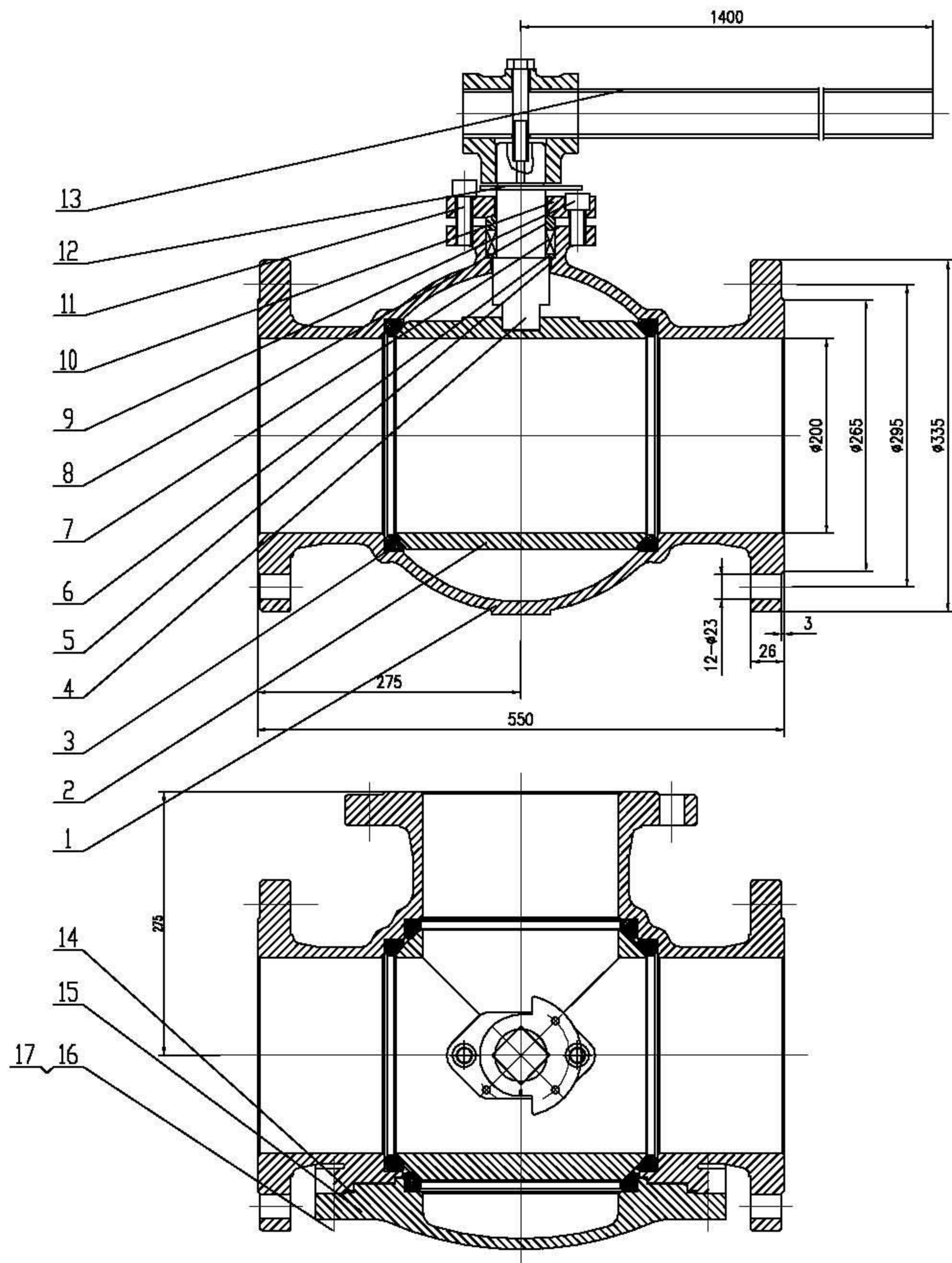


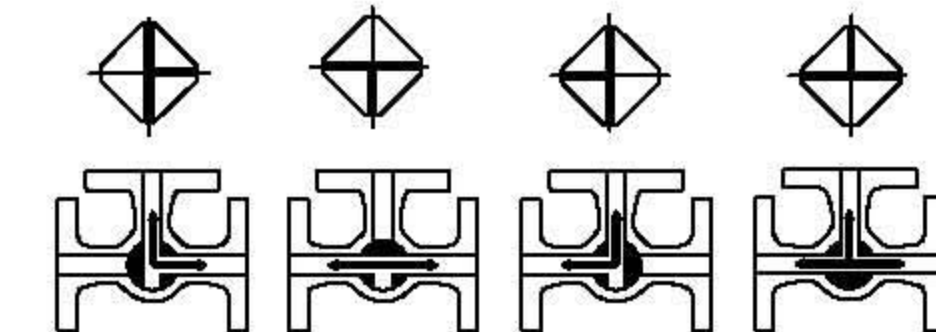
Q45F-10C-DN200



performance standard		
Class	1.6	
Test Pressure	Shell Test	2.4
	Seal Test	1.76 MPa
	Air Test	0.6
service temperature	-28 ~ 150	

- Design Standard
1. Design and Manufacture Standard : GB12237;
 2. Flange Ends Dimension Standard : JB79-94;
 3. Inspection and Test Standard : API 598;

The position of stem indicate and correspondence flow passage.



17		Nut	ASTM A194 2H		
16		Bolt	ASTM A193 B7		
15		Bonnet	ASTM A216 WCB		
14		Gasket	Graphite		
13		Lever	Carbon steel		
12		Locating	AISI 1025		
11		Socket Head Cap Screw	ASTM A193 B7		
10		Gland Flange	ASTM A216 WCB		
9		Socket Head Cap Screw	ASTM A193 B7		
8		Gland	ASTM A182 F6a		
7		Packing	Graphite		
6		Gasket	Graphite+ss304		
5		Bearing	PTFE+SS304		
4		Stem	ASTM 420		
3		Seat	PTFE		
2		Ball	SS304+ENP		
1		Body	ASTM A216 WCB		
NO.	DWG NO.	Part Name	QT.	Material	Remark

				Ball Valve			drawing
Mark	Number	Redirection	Signature	Date	Drawing Mark	Weight	
Design			Standardization				
Proofread			Authorize				
Censor			Approve				
Technics			Date		Total	Page	
							Q45F-10C-DN200